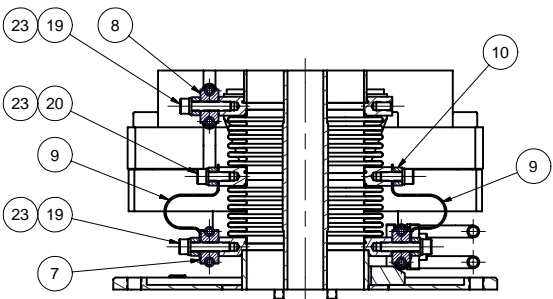
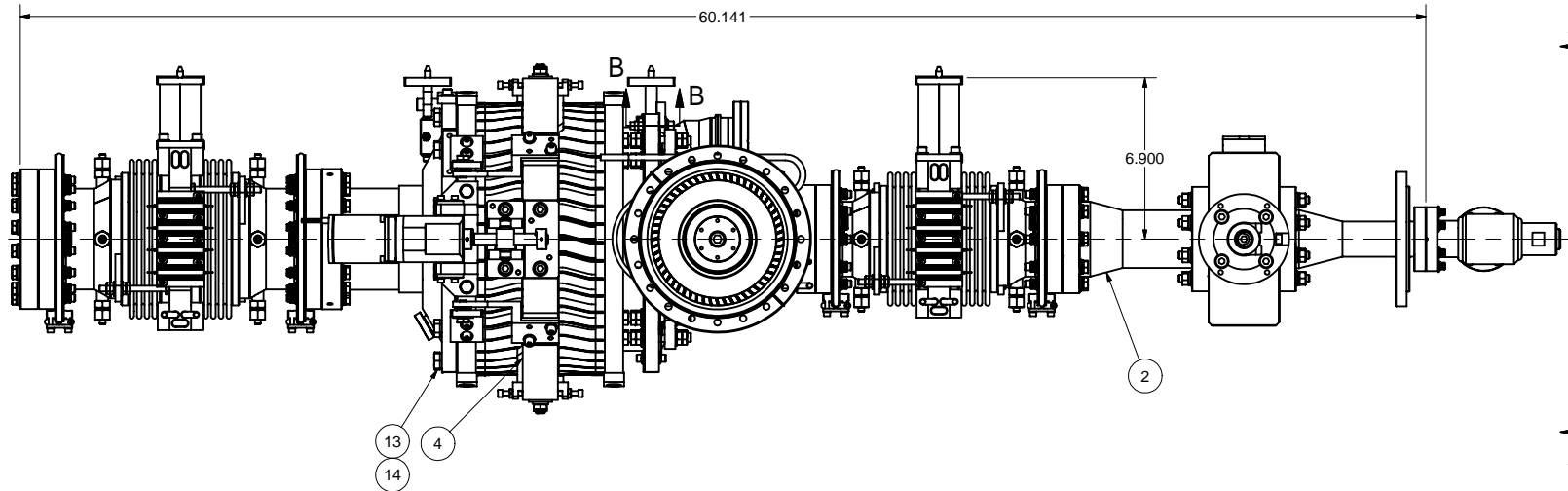
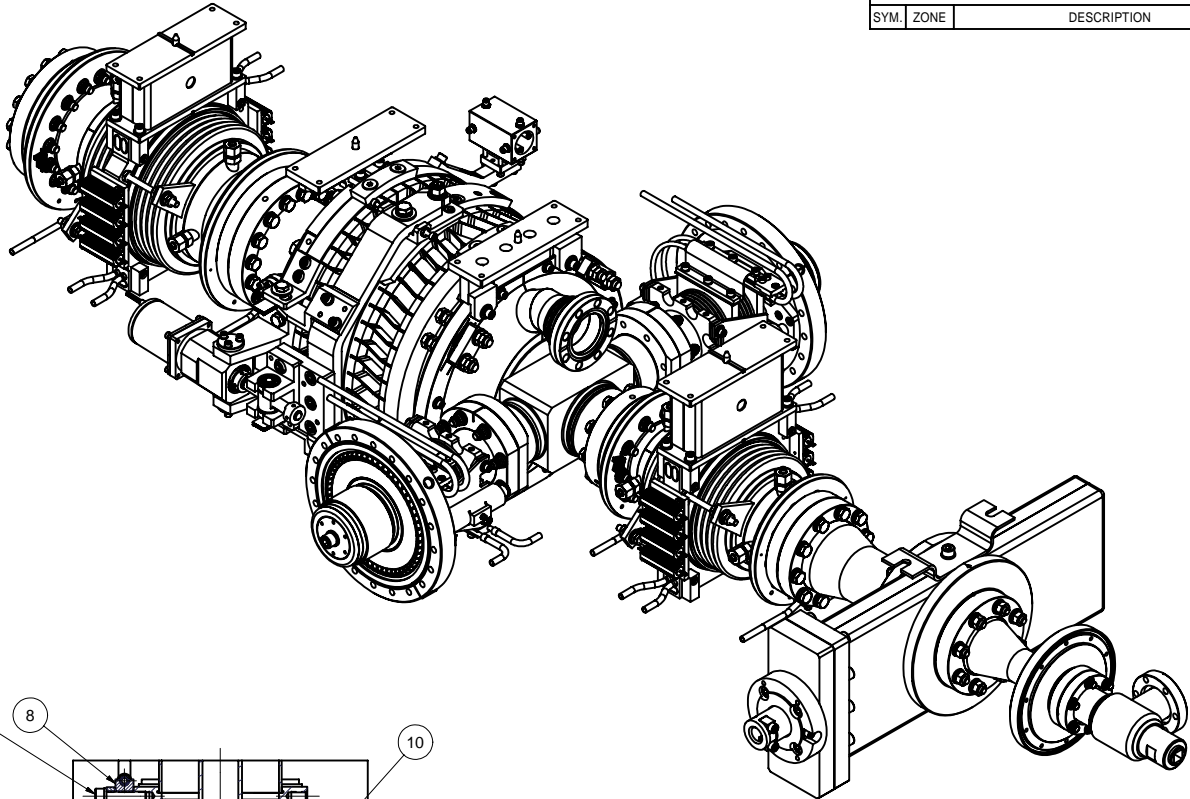
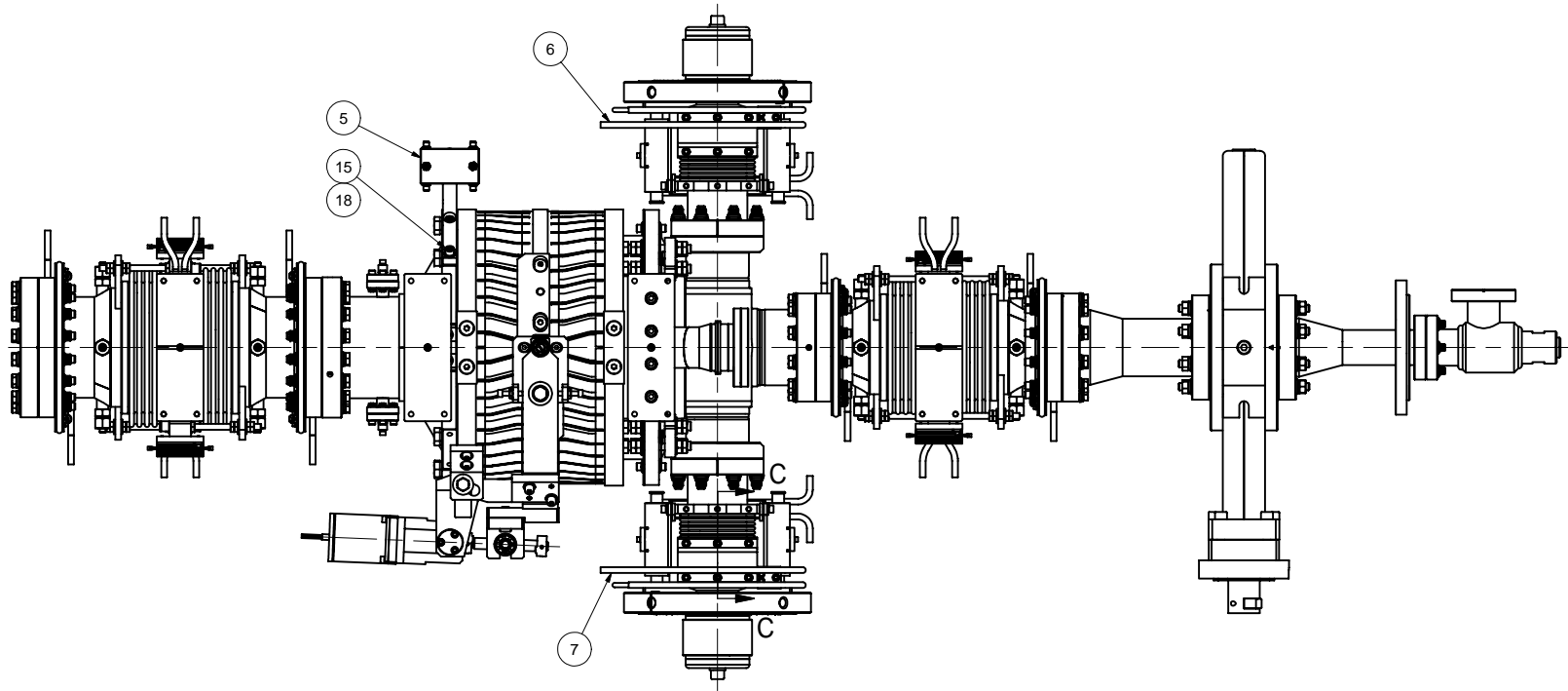


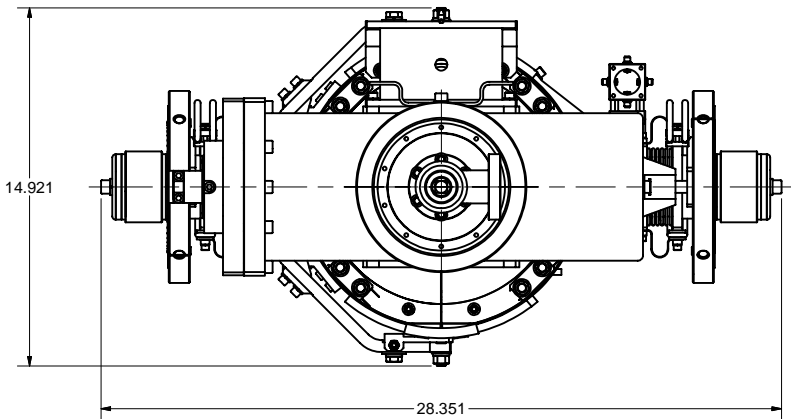
REVISIONS				
SYM.	ZONE	DESCRIPTION	DATE	APP.



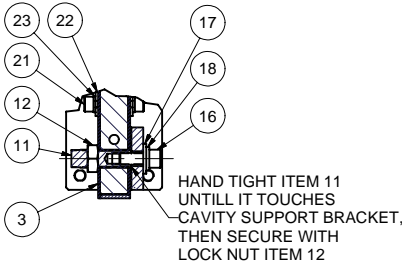
SECTION C-C
SCALE 1:2

23	-	#10 Spring Washer, 316 SS	46		McMaster-Carr's 92147A430
22	-	#10 Washer, 0.5 OD, 316 SS	16		McMaster-Carr's 91950A027
21	-	#10-32 x 3/8 Socket Head Cap Screw, 316 SS	16		McMaster-Carr's 92185A988
20	-	#10-32 x 1/2 Socket Head Cap Screw, 316 SS	12		McMaster-Carr's 92185A989
19	-	#10-32 x 7/8 Socket Head Cap Screw, 316 SS	18		McMaster-Carr's 92185A960
18	-	1/4 Spring Washer, 316 SS	4		McMaster-Carr's 92147A029
17	-	1/4 Washer, 0.625 OD, Thick, 316 SS	2		McMaster-Carr's 91950A029
16	-	1/4-28 x 5/8 Socket Head Cap Screw, 300 SS, Diconited	2		McMaster-Carr's 92200A582
15	-	1/4-28 x 3/4 Socket Head Cap Screw, 316 SS	2		McMaster-Carr's 92185A561
14	-	M10 Spring Washer, 316 SS	12		McMaster-Carr's 92153A434
13	-	M10 x 30 Hex Head Cap Screw, 316 SS	12		McMaster-Carr's 93635A424
12	-	3/8-24 Hex Jam Nut, 316 SS	2		McMaster-Carr's 94805A217
11	7102-032 (SH.3)	3/8-24 SET SCREW	2		
10	7102-036	CLAMP STRIP	10		
9	7102-036	80 K FLEXIBLE JUMPER	4		
8	7102-037	INPUT COUPLER COLD, 5 K FLANGE COOLING UNIT	2		
7	7102-036	INPUT COUPLER COLD, 80 K FLANGES COOLING UNIT, LEFT	1		
6	7102-036	INPUT COUPLER COLD, 80 K FLANGES COOLING UNIT, RIGHT	1		
5	7102-040	WPM W/ BRACKET ASM	1		
4	7102-005	TUNER WITH PIEZO ASSEMBLY	1		
3	7102-025	CAVITY MAGNETIC SHIELD I	1		
2	7110-029	BEAM LINE COMPONENTS ASSEMBLY I	1		
1	7110-033 (SH.1)	BEAM LINE COMPONENTS ASSEMBLY II	X		

1 BEAM LINE COMPONENTS ASSEMBLY II
FILE NAME: 7110-033
SHEET NO.: 1
DFT. SCALE: 1:4
MATERIAL:
QTY: 1 PER HTC
NOTES: 1. ALL DIMENSIONS FOR REFERENCE ONLY.



VIEW A-A



SECTION B-B
SCALE 1:2

HAND TIGHT ITEM 11 UNTILL IT TOUCHES CAVITY SUPPORT BRACKET, THEN SECURE WITH LOCK NUT ITEM 12

FOR MACHINING LUBRICANT USE ONLY
ALKALINE DETERGENT LUBRICANT CIMSTAR 40
OR EQUIVALENT APPROVED BY CORNELL LEPP

TECHNICAL RESOURCE APPROVALS REQUIRED BEFORE FABRICATION			
	OK	DATE	N/A
DRAFTING (O'Connell):			
MACHINE SHOP (Kaminski):			
CHEMISTRY (Conklin):			
ELECTRONICS SHOP (Barley):			
FURNACE BRAZING (Sherwood):			
BEAM WELDING (Sears):			
WELDING OTHER (Gallagher):			
UTILITIES INTEGRATION (Gallagher):			
STOCKROOMS (Lockwood):			

ITEM	DWG. NO.	DESCRIPTION	G1	G2	G3	REMARKS	REV.
PLOT DATE: 4/10/2007 CAD FILE NAME: 7110-033.idw			QUANTITY				
UNLESS OTHERWISE SPECIFIED: DIMENSIONS ARE IN INCHES: TOLERANCES ON: .00 ± .010 .000 ± .005 FRACTIONS ± 1/64 ANGLES ± 0.5° ALL SURFACES			CORNELL UNIVERSITY FLOYD R. NEWMAN LABORATORY ITHACA, NY 14853			ERL HORIZONTAL TEST CRIMODULE BEAM LINE COMPONENTS ASSEMBLY II	
CHECKED BY: V.M. APPROVED BY: V.M.		DRAWN BY V.Medjdzade	DRAWN FOR M.Liepe	DATE 4/1/2007	SCALE AS NOTED	D	7110-033 SH. NO. 1 OF 1